

VERTICAL TURBINE FIRE PUMPS

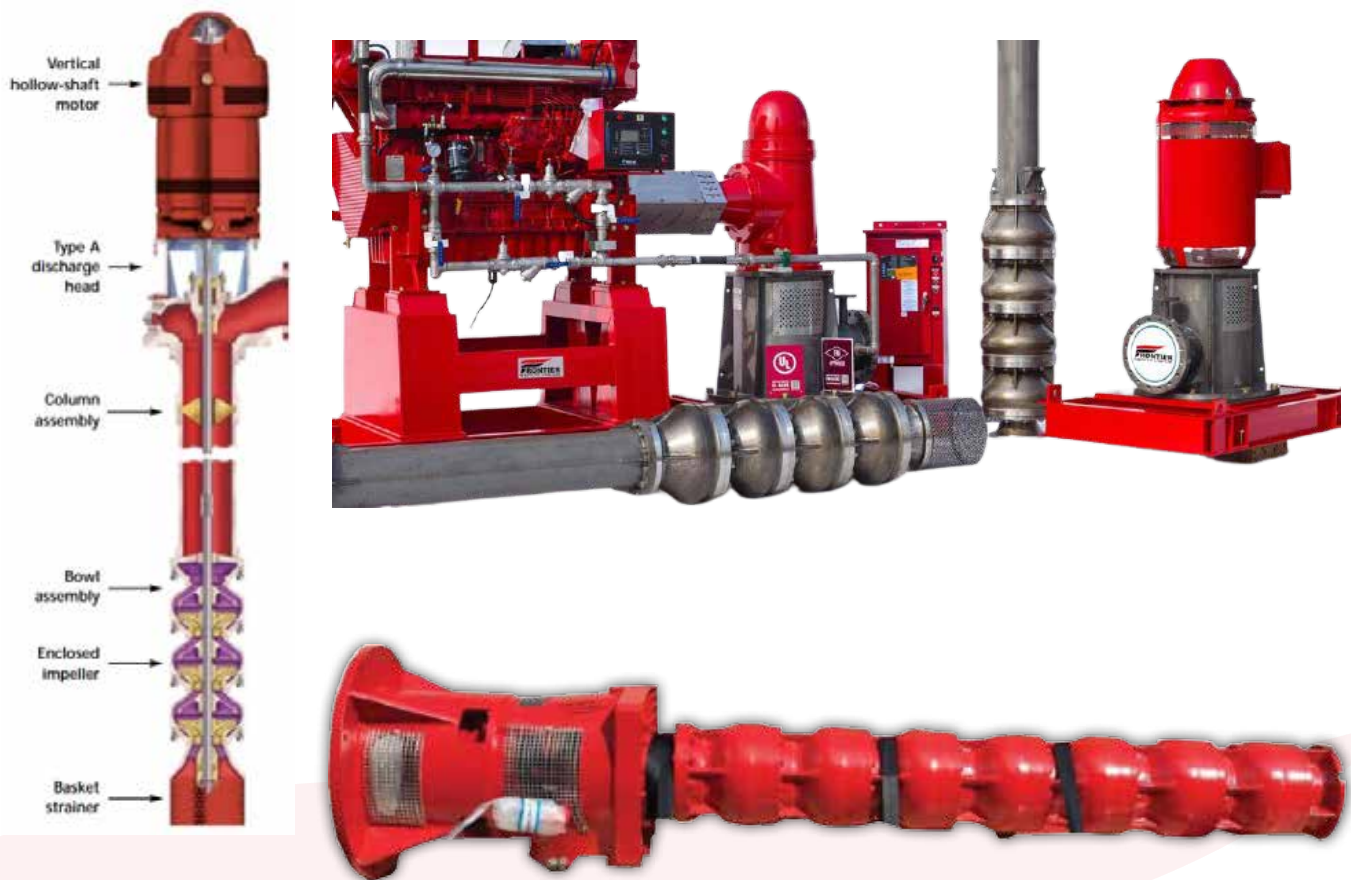


VERTICAL TURBINE FIRE PUMP

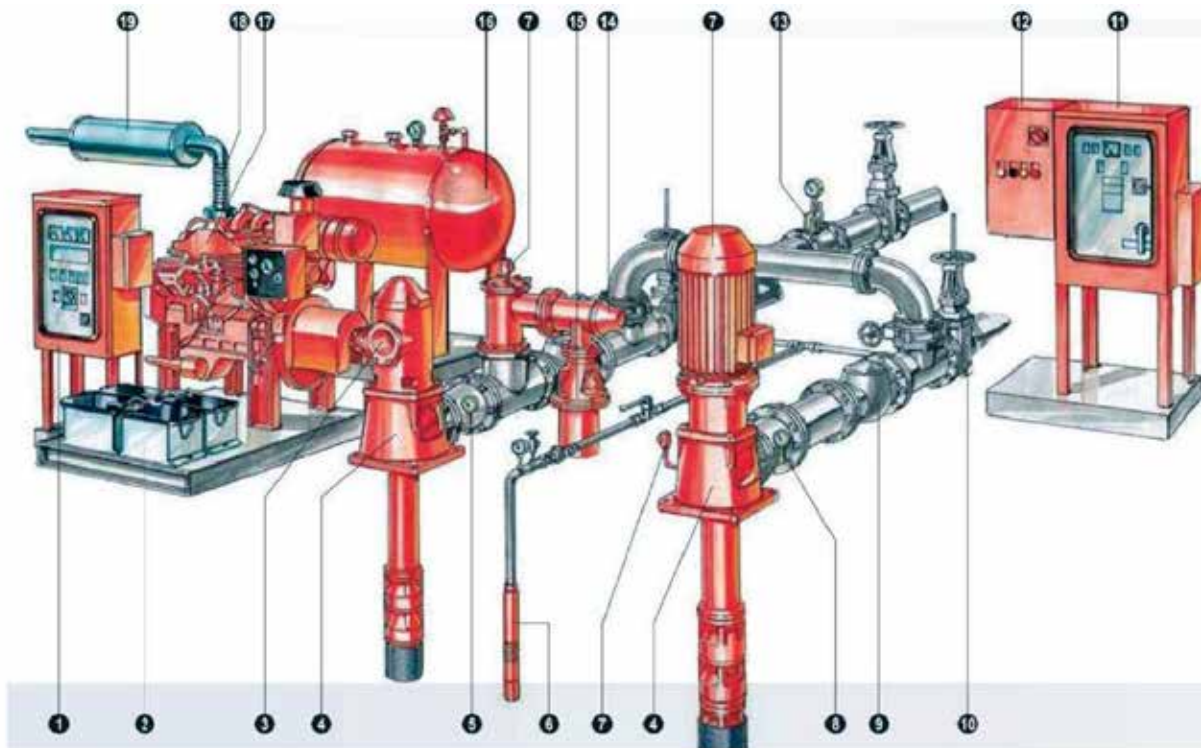
VERTICAL TURBINE PUMPS

Vertical shaft turbine type fire pumps have submerged impellers contained in a series – bowl assembly at the bottom of a vertical shaft. The design is similar to the pumps used extensively for industrial & municipal services. These pumps are UL approved for discharging water from tanks, streams, open sumps, drilled wells. Each pumps consist of a discharge head, motor, stand, column pipe, line shaft, bowl assembly and suction strainer.

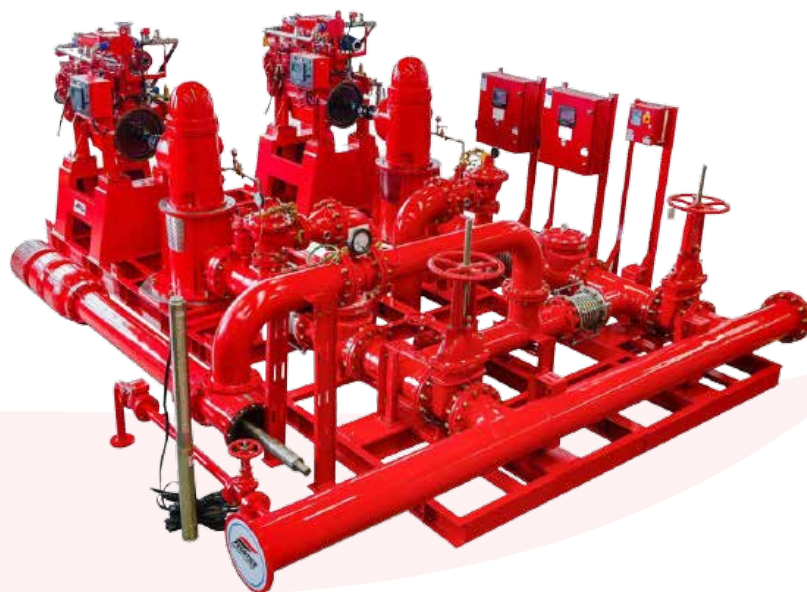
TECHNICAL DATA SUMMARY



VERTICAL TURBINE FIRE PUMP



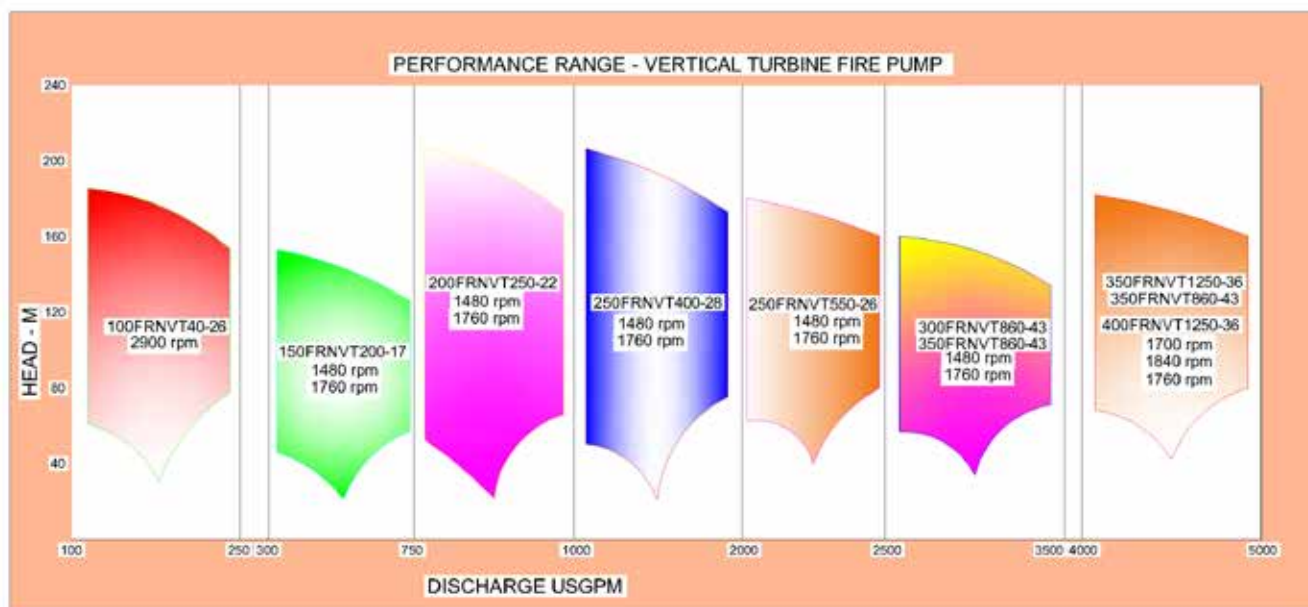
1	Diesel engine fire pump controller
2	Batteries
3	Jockey pump
4	Concentric discharge increaser
5	Enclosed discharge overflow cone
6	Eccentric suction reducer
7	Suction pressure gauge
8	pump
9	Circulation relief valve
10	Electric motor
11	Check valve
12	OS & Y gate valve
13	Electric motor fire pump controller
14	Jockey pump controller
15	Flow meter
16	Automatic air release valve
17	Main relief valve
18	Discharge pressure gauge
19	Fuel tank
20	Diesel engine
21	Flexible exhaust connector
22	Exhaust muffler



VERTICAL TURBINE FIRE PUMP PERFORMANCE RANGE

Centrifugal Fire Pumps, Vertical Shaft, Turbine Type

Performance Range-Centrifugal Fire Pumps, Vertical Shaft Turbine Type



QXXW.EX28018 - Centrifugal Fire Pumps, Vertical Turbine

Centrifugal Fire Pumps, Vertical Turbine

Frontier Safety Limited
85 GREAT PORTLAND STREET
FIRST FLOOR
LONDON, W1W 7LT United Kingdom

EX28018


Rated Capacity gpm	Model Dsg	Rated Net Pressure Range psi	Approx Speed rpm	Stages
100	100FRNVT40-6	40-44	2900	1
100	100FRNVT40-6	61-265	2900	2-6
150	100FRNVT40-6	40-44	2900	1
150	100FRNVT40-6	60-263	2900	2-6
200	100FRNVT40-6	40-43	2900	1
200	100FRNVT40-6	56-257	2900	2-6
250	100FRNVT40-6	40-42	2900	1
250	100FRNVT40-6	52-250	2900	2-6
300	150FRNVT200-17	40-235	1480	2-8
400	150FRNVT200-17	40-227	1480	2-8
450	150FRNVT200-17	40-225	1480	2-8
500	150FRNVT200-17	40-221	1480	2-8
500	150FRNVT200-17	40-241	1760	2-6
750	150FRNVT200-17	74	1760	2
750	150FRNVT200-17	111	1760	3
750	150FRNVT200-17	148	1760	4
750	150FRNVT200-17	185	1760	5

750	150FRNVT200-17	222	1760	6
750	200FRNVT250-22	40-313	1480	2-8
750	200FRNVT250-22	40-58	1760	1
750	200FRNVT250-22	75-288	1760	2-5
1000	200FRNVT250-22	40-288	1480	2-8
1000	200FRNVT250-22	40-54	1760	1
1000	200FRNVT250-22	69-272	1760	2-5
1250	250FRNVT400-28	41-51	1480	1
1250	250FRNVT400-28	82-102	1480	2
1250	250FRNVT400-28	124-153	1480	3
1250	250FRNVT400-28	165-305	1480	4-6
1250	250FRNVT400-28	60-74	1760	1
1250	250FRNVT400-28	120-147	1760	2
1250	250FRNVT400-28	180-221	1760	3
1250	250FRNVT400-28	240-294	1760	4
1500	250FRNVT400-28	40-49	1480	1
1500	250FRNVT400-28	77-97	1480	2
1500	250FRNVT400-28	115-292	1480	3-6
1500	250FRNVT400-28	58-71	1760	1
1500	250FRNVT400-28	115-143	1760	2
1500	250FRNVT400-28	173-214	1760	3
1500	250FRNVT400-28	230-285	1760	4
2000	250FRNVT400-28	63	1760	1
2000	250FRNVT400-28	125	1760	2
2000	250FRNVT400-28	188	1760	3
2000	250FRNVT400-28	251	1760	4
2000	250FRNVT550-26	40-44	1480	1
2000	250FRNVT550-26	77-88	1480	2
2000	250FRNVT550-26	116-132	1480	3

2000	250FRNVT550-26	155-176	1480	4
2000	250FRNVT550-26	194-264	1480	5-6
2000	250FRNVT550-26	57-66	1760	1
2000	250FRNVT550-26	113-133	1760	2
2000	250FRNVT550-26	170-199	1760	3
2000	250FRNVT550-26	227-266	1760	4
2500	250FRNVT550-26	61	1760	1
2500	250FRNVT550-26	123	1760	2
2500	250FRNVT550-26	184	1760	3
2500	250FRNVT550-26	245	1760	4
2500	300FRNVT860-43	50-82	1480	1
2500	300FRNVT860-43	100-245	1480	2-3
2500	350FRNVT860-43	74-118	1760	1
2500	350FRNVT860-43	149-236	1760	2
3000	300FRNVT860-43	53-78	1480	1
3000	300FRNVT860-43	105-235	1480	2-3
3000	350FRNVT860-43	69-115	1760	1
3000	350FRNVT860-43	139-230	1760	2
3500	350FRNVT860-43	73-111	1760	1
3500	350FRNVT860-43	146-222	1760	2
3500	350FRNVT1250-36	47-62	1480	1
3500	350FRNVT1250-36	93-124	1480	2
3500	350FRNVT1250-36	140-249	1480	3-4
3500	350FRNVT1250-36	56-74	1600	1
3500	350FRNVT1250-36	112-148	1600	2
3500	350FRNVT1250-36	168-295	1600	3-4
4000	350FRNVT860-43	104	1760	1
4000	350FRNVT860-43	207	1760	2
4000	350FRNVT1250-36	45-61	1480	1

4000	350FRNVT1250-36	90-121	1480	2
4000	350FRNVT1250-36	135-243	1480	3-4
4000	350FRNVT1250-36	54-72	1600	1
4000	350FRNVT1250-36	107-144	1600	2
4000	350FRNVT1250-36	161-288	1600	3-4
4000	400FRNVT1250-36	61-82	1700	1
4000	400FRNVT1250-36	122-163	1700	2
4000	400FRNVT1250-36	183-245	1700	3
4000	400FRNVT1250-36	66-88	1760	1
4000	400FRNVT1250-36	133-177	1760	2
4000	400FRNVT1250-36	199-265	1760	3
4000	400FRNVT1250-36	74-98	1840	1
4000	400FRNVT1250-36	148-195	1840	2
4000	400FRNVT1250-36	222-293	1840	3
4500	400FRNVT1250-36	58-79	1700	1
4500	400FRNVT1250-36	116-159	1700	2
4500	400FRNVT1250-36	174-238	1700	3
4500	400FRNVT1250-36	63-86	1760	1
4500	400FRNVT1250-36	126-172	1760	2
4500	400FRNVT1250-36	189-259	1760	3
4500	400FRNVT1250-36	70-95	1840	1
4500	400FRNVT1250-36	141-190	1840	2
4500	400FRNVT1250-36	211-285	1840	3
5000	400FRNVT1250-36	229	1700	3
5000	400FRNVT1250-36	249	1760	3
4500	350FRNVT1400-45	59-87	1480	1
		118-261		2-3
5000		70-85		1
		141-170		2

		211-255		3
4500		60-107	1630	1
		119-322		2-3
5000		72-105		1
		143-316		2-3
4500		72-126	1760	1
		143-377		2-3
5000		68-125		1
		137-374		2-3
5500		83-122		1
		166-367		2-3
6000		120		1
		240		2
		361		3
2000	250FRNVT900-46	40-224	1480	1-3
2500		40-219		1-3
3000		49-70		1
3000		99-211		2-3
2000		57-222	1800	1-2
2500		54-217		1-2
3000		51-212		1-2
3500		74-103		1
3500		149-205		2

Trademark and/or Tradename: 

Last Updated on 2021-10-14

The appearance of a company's name or product in this database does not in itself assure that products so identified have been manufactured under UL's Follow-Up Service. Only those products bearing the UL Mark should be considered to be Certified and covered under UL's Follow-Up Service. Always look for the Mark on the product.

UL permits the reproduction of the material contained in the Online Certification Directory subject to the following conditions:

1. The Guide Information, Assemblies, Constructions, Designs, Systems, and/or Certifications (files) must be presented in their entirety and in a non-misleading manner, without any manipulation of the data (or drawings).
2. The statement "Reprinted from the Online Certifications Directory with permission from UL" must appear adjacent to the extracted material. In addition, the reprinted material must include a copyright notice in the following format: "© 2021 UL LLC"